

LOCATION PLAN
(Not to scale)



Builders & Developers



7-1-282/C/1/76, Flat No.601,
SRS Enclave, B.K. Guda, Hyderabad - 500 018.
Cell: +91 90003 97333, 90003 91333, 98490 04941
Email: info@sikharaprojects.com
www.sikharaprojects.com

Member of
CREDAI
Confederation of Real Estate
Developers' Associations of India

Architects



8-2-682/1, 601, Landmark Banjara Road No.12,
Banjara Hills, Hyderabad - 500 034.
T : +91 40 40179395, +91 40 6453 9395
Email: info@trudesigns.in
Web : www.trudesigns.in

NOTE: This brochure is only a conceptual presentation of the project and not a legal offering. The promoters reserve the right to make changes in the elevation, plans and specifications, as deemed fit. Artifice 09885253570

business experience.

Akira
Sikhara
PLAZA
The destination

A project by



The new world



Akira
Sikhara
PLAZA
The destination



COMMERCIAL COMPLEX @ NAMPALLY, HYDERABAD.

A project by

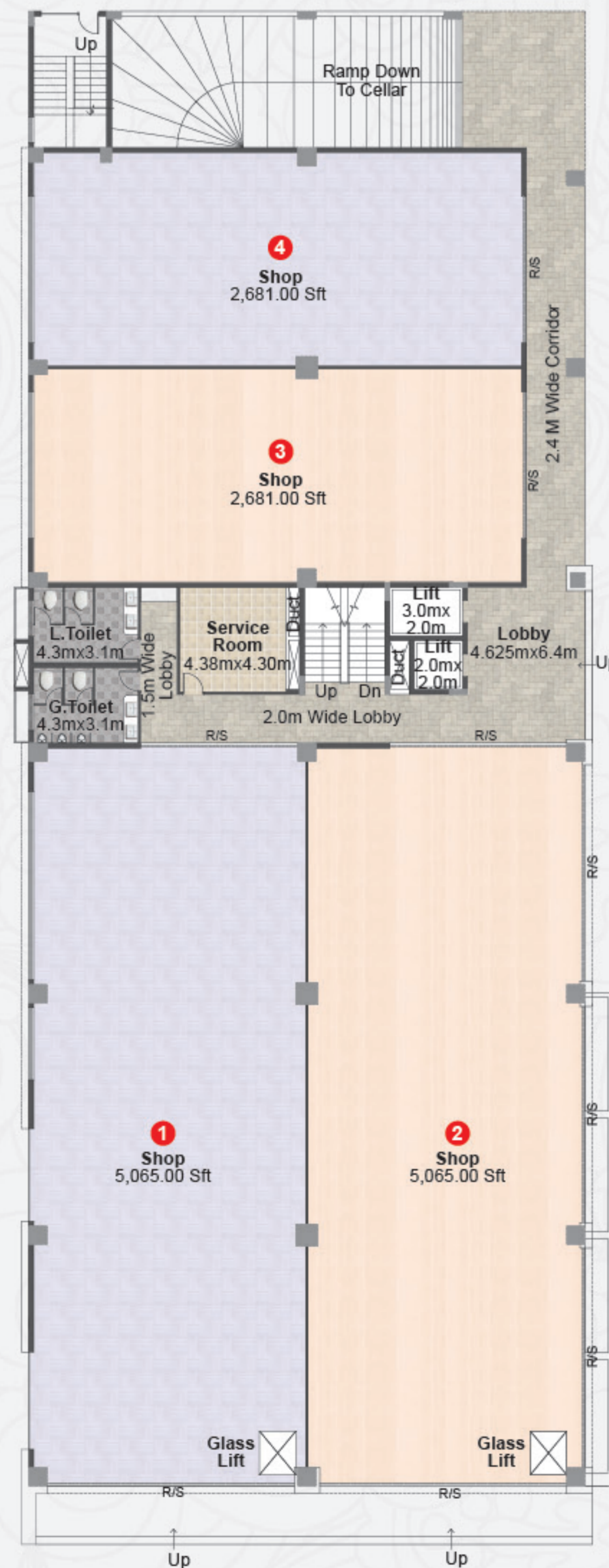




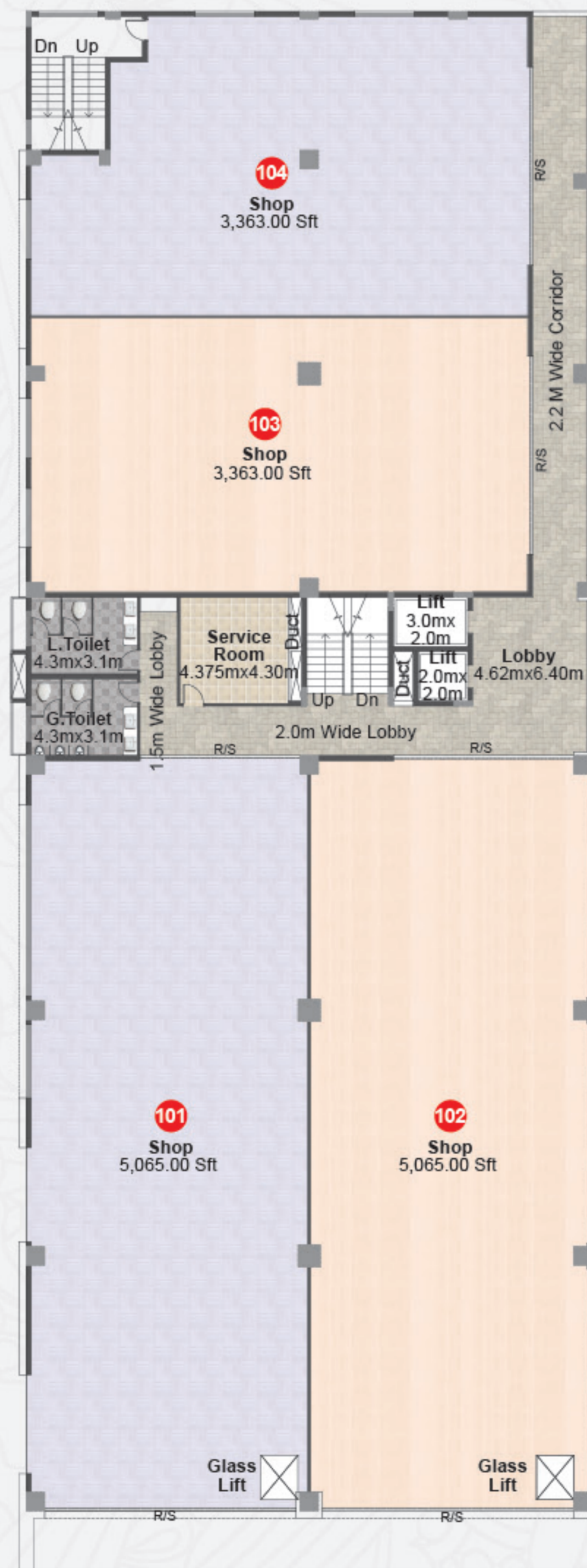
Space for every kind of
business and service.

In a prime centre as Nampally that lacks good commercial space, here's a business destination that is destined to change the way Hyderabad shops and experiences leisure, this side of town. Where else, but right here at Akira Sikhara Plaza, a massive 5-floor, 85,000 sft. (approximately) commercial and shopping complex right in the centre of Hyderabad. It's a location that has all the potential to bring in the eyeballs and the footfalls that your brand or store needs. Whether it's a large multi-chain showroom, single ownership store or a boutique-kind of business, there's space for everyone here – with excellent four- and two-wheeler parking space. Give your brand the location it needs and grow your business fast.

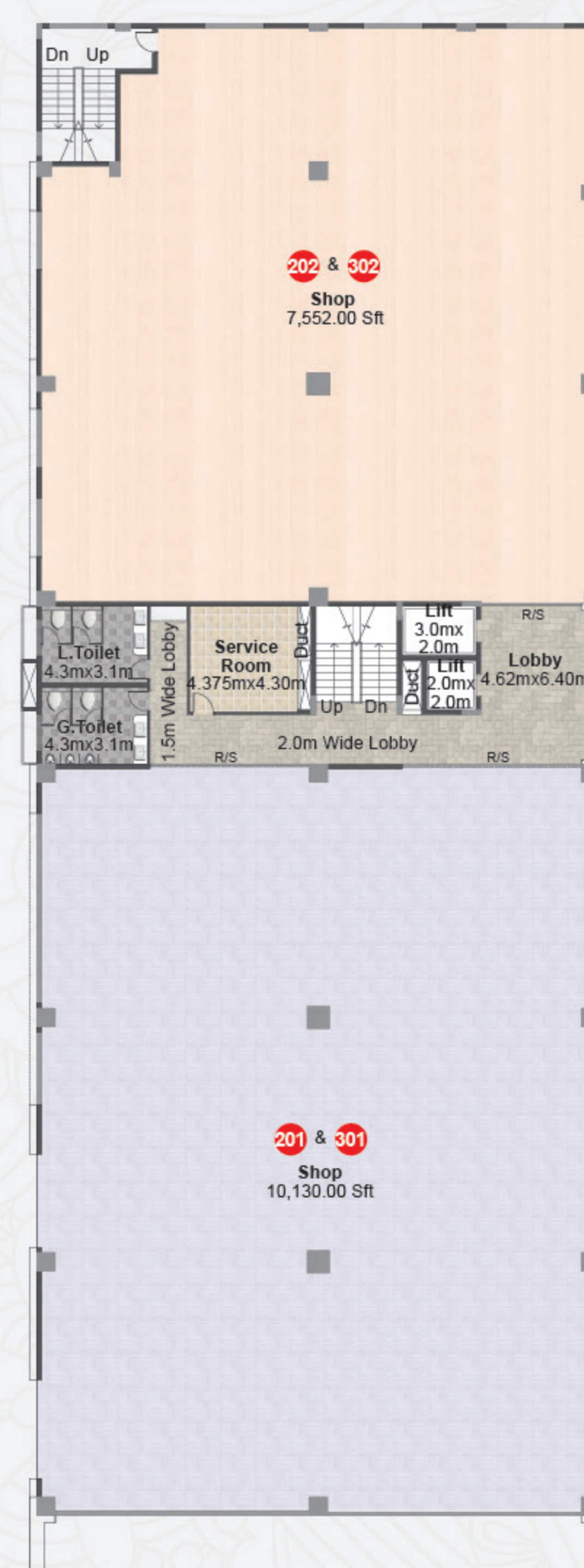
Ground Floor Plan



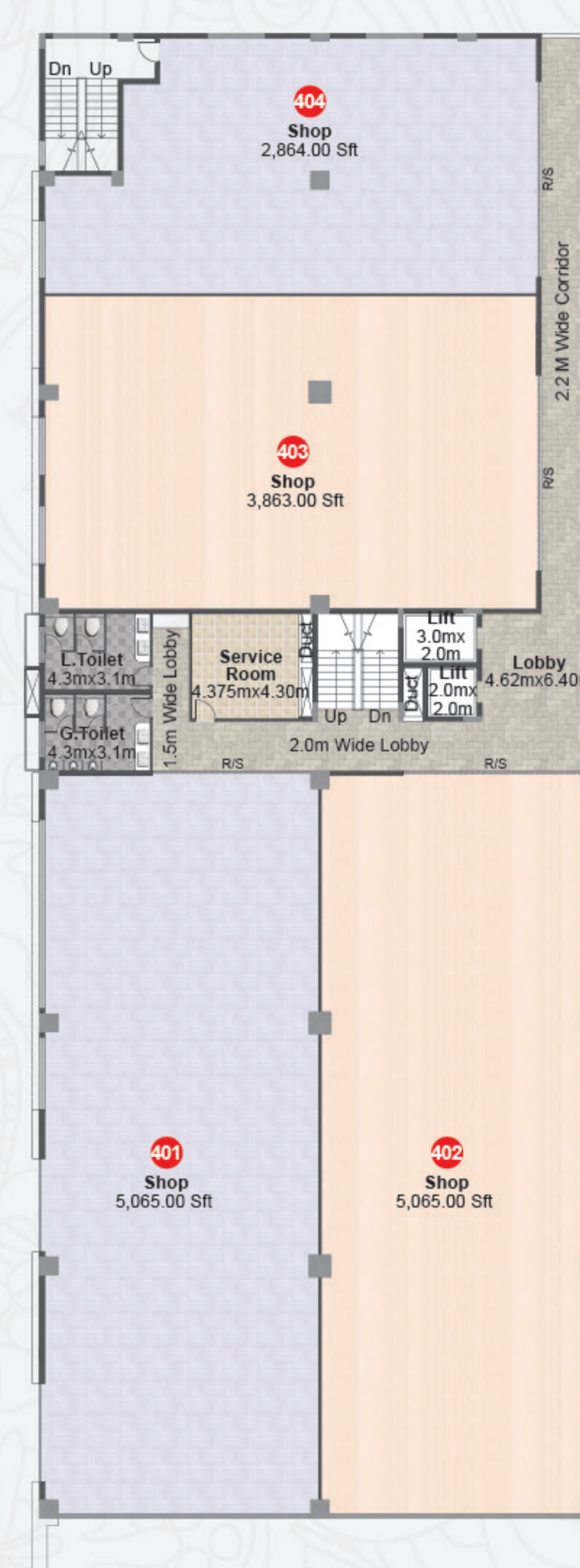
First Floor Plan



Second & Third Floor Plan



Fourth Floor Plan



Akira
Sikhara
PLAZA
The destination



Cellar Floor Plan



Sub-cellar Floor Plan



FOUNDATION & STRUCTURE

The RCC-framed structure shall be designed and built as per the standard specifications of 'Bureau of Indian Standards' taking due care for earthquake forces and safe-bearing capacity of the strata. Foundations shall be laid only on attaining hard strata of soil.



FLOORING & WALL CLADDING

- A) Entrance lobbies on all floors: Polished granite/vitrified tiles.
- B) Shops: Commercial space, high polished vitrified tiles.
- C) Toilets & Pantries: Vitrified tiles [2'x1'] for wall dadoing up to a height of 7'-00"
- D) Wash basin and work counters: Granite



FAÇADE/ELEVATION

As per approved design by the architect.



WINDOWS

UPVC or equivalent windows.



BACK-UP POWER

Back-up generator shall be provided for lifts/water pumps/common area lighting.



ELEVATORS

Of 13-persons capacity.



FIRE FIGHTING

Fire-fighting system of required capacity of tanks/hydrants/pumps/ exterior pipes shall be provided.

SPECIFICATIONS



WALLS

External Walls shall be built with 8" thick Aerocon/or 8"-9" lightweight country bricks in CM [1: 6]/AAC. Internal Walls shall be with 4 1/2" thick, lightweight moulded clay bricks in CM [1:4]/AAC.



PAINTS & FINISHES

- A) External: Asian/Alltek/Spectrum exterior paints.
- B) Internal Finished: Asian Emulsion or Acrylic Emulsion over Smooth Alltek/Asian Luppam for internal walls and ceiling.

